

# Why is Lordship so Difficult?

20 + 24

A photograph of an open book with a cross and the numbers 20 and 24 on top. The scene is set against a sunset background with a bright sun flare.

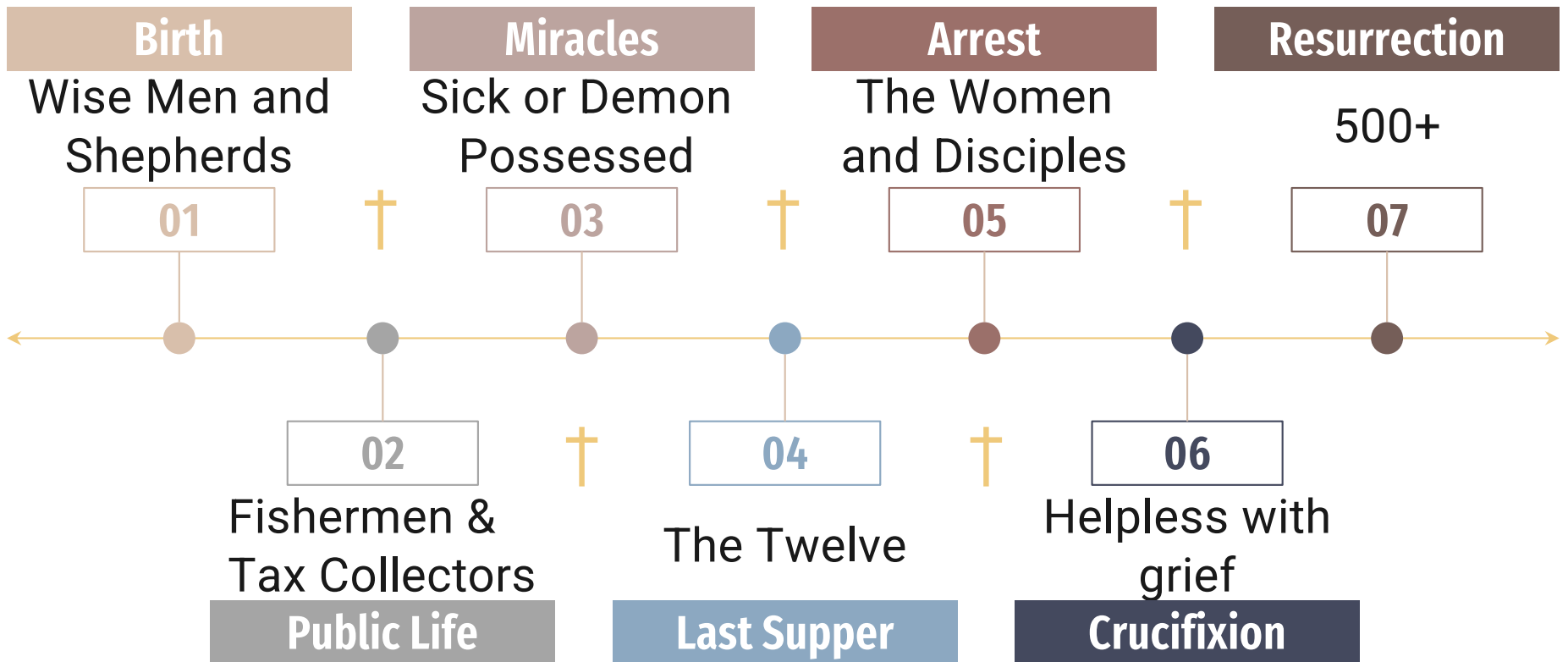
**ORCHARD VALLEY  
CHRISTIAN CHURCH**

# Why is the Lordship of Christ so Difficult?

Why do you **call me 'Lord, Lord,'** and **not do what I tell you?** Everyone who comes to me and hears my words and does them, I will show you what he is like: he is like a man building a house, who dug deep and laid the foundation on the rock. And when a flood arose, the stream broke against that house and could not shake it, because it had been well built. But the one who hears and does not do them is like a man who built a house on the ground without a foundation. When the stream broke against it, immediately it fell, and the ruin of that house was great.

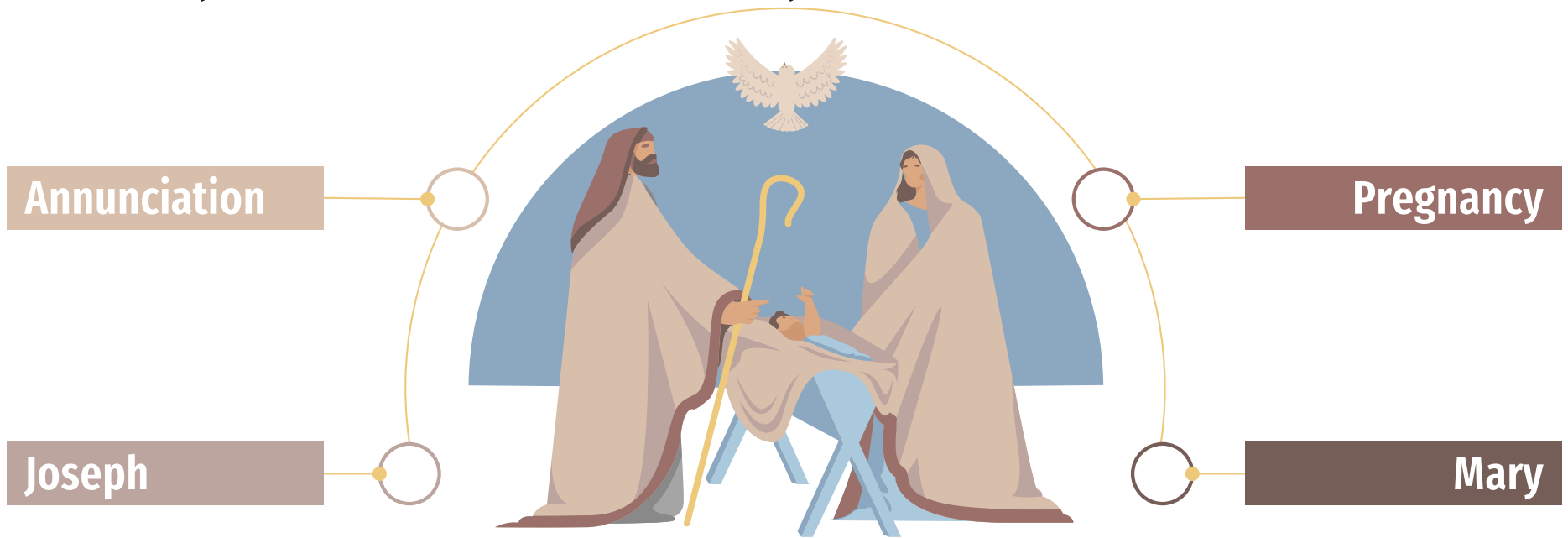
**Luke 6:46-49**

# What if you had followed Jesus while he lived?

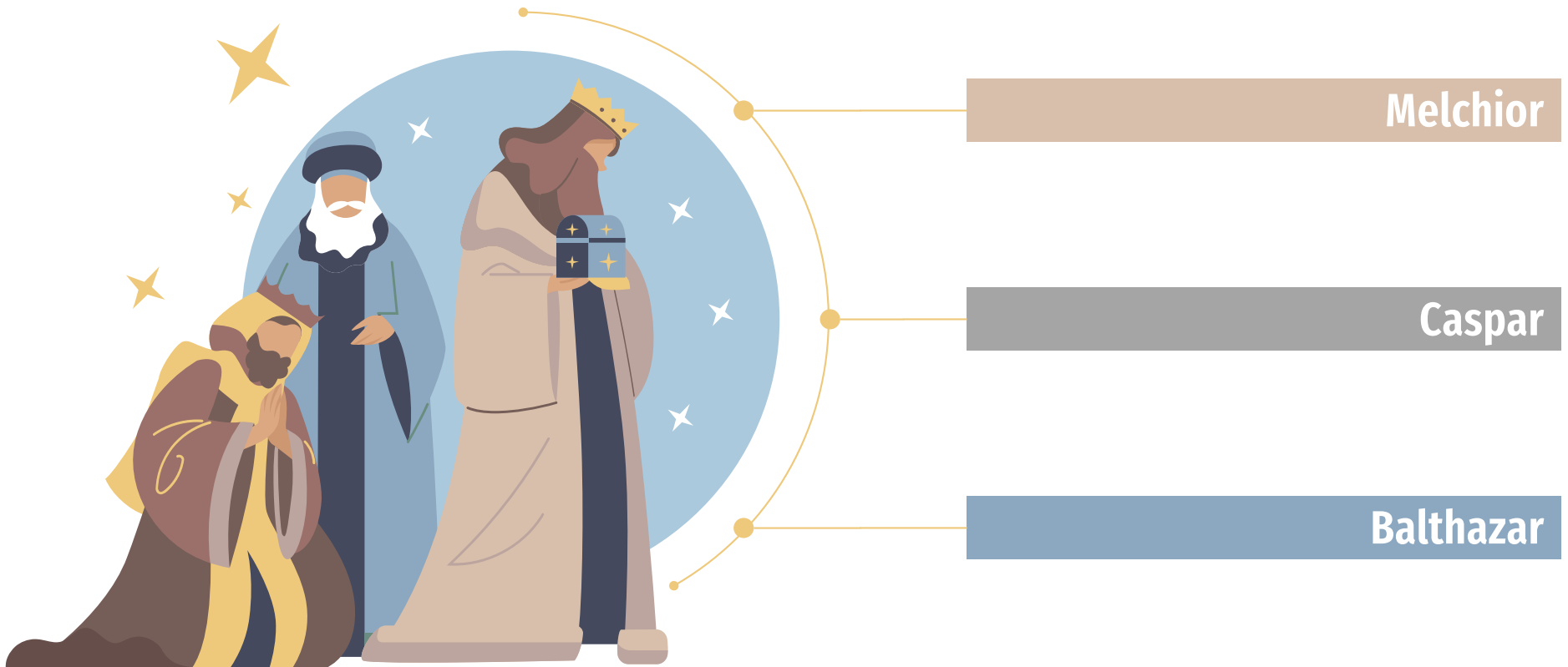


# It wasn't Easy for Mary or Joseph

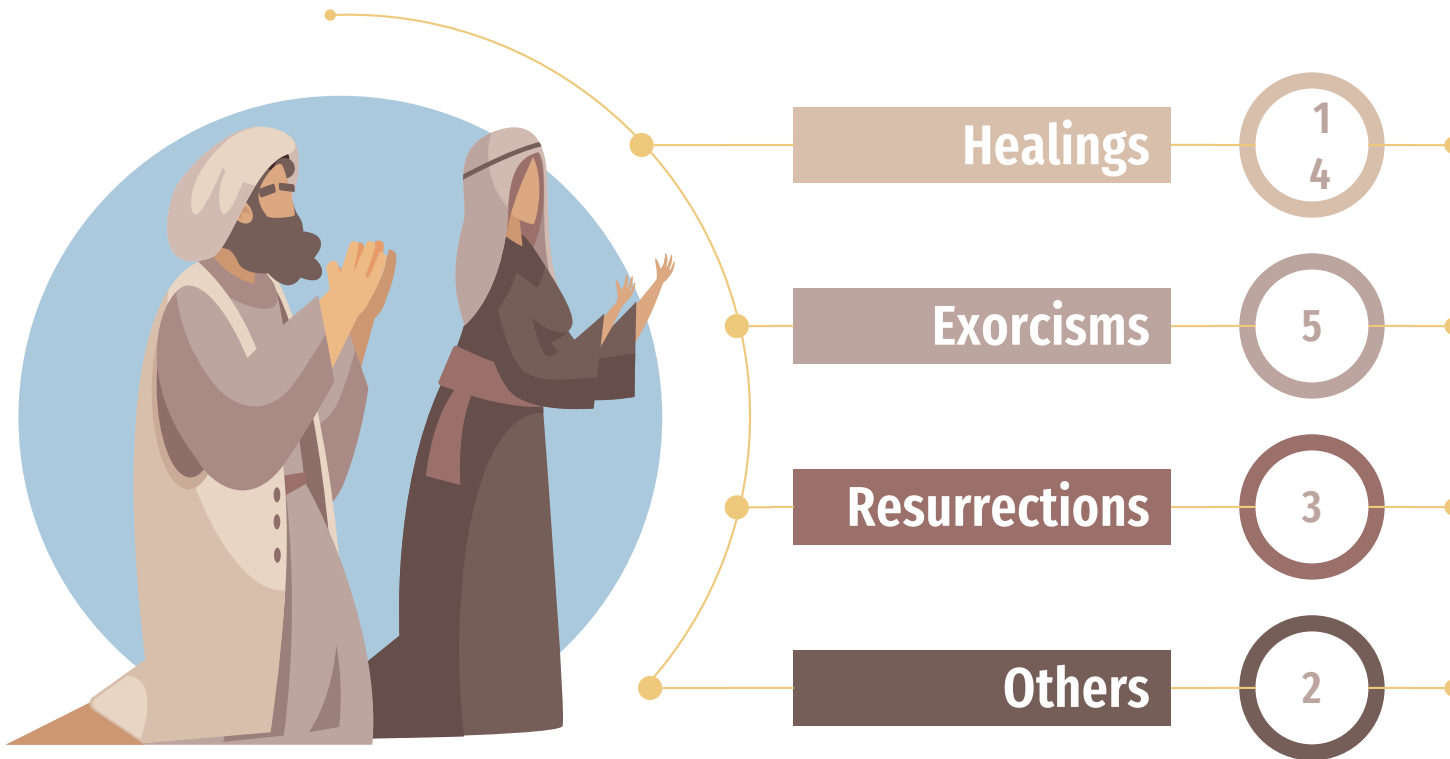
- When Jesus was born - While Jesus ministered - When he died



# It wasn't easy for the Wise Men

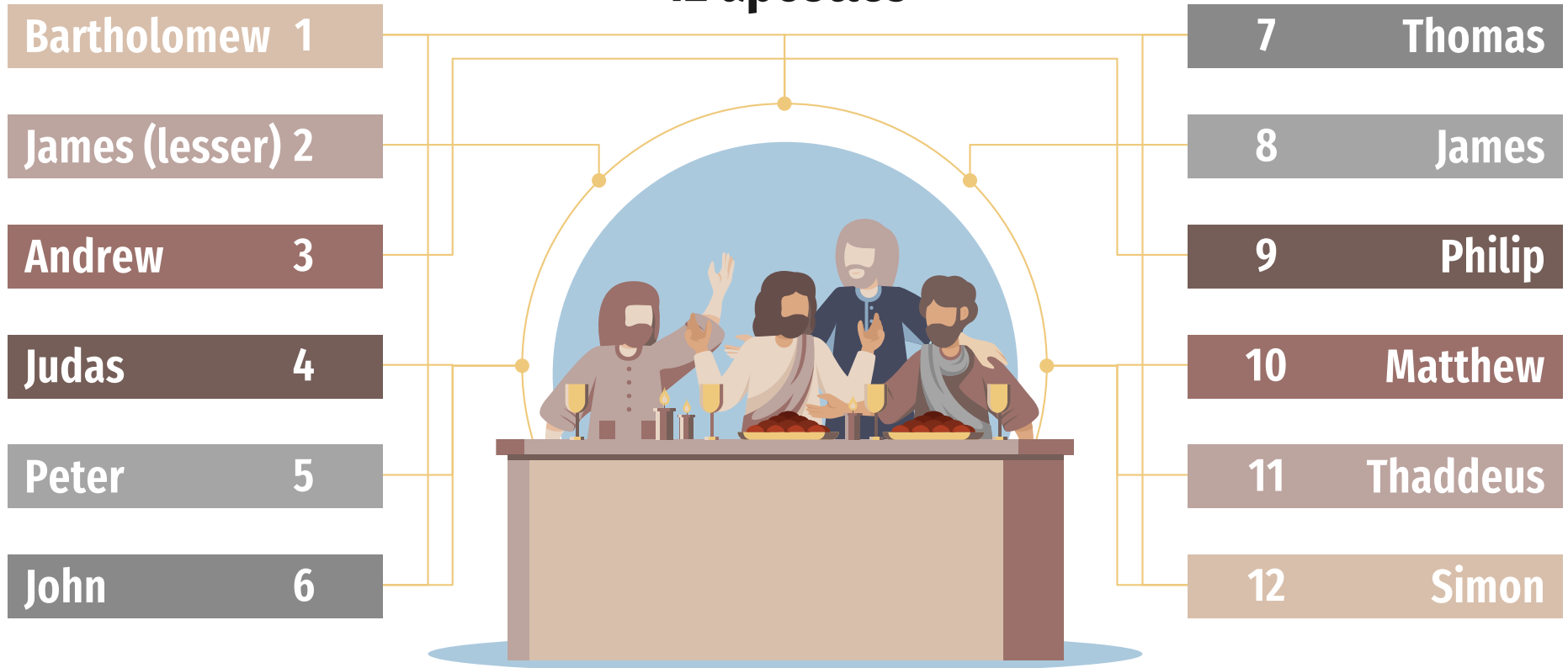


# It wasn't easy for those who decided to follow Jesus as Lord



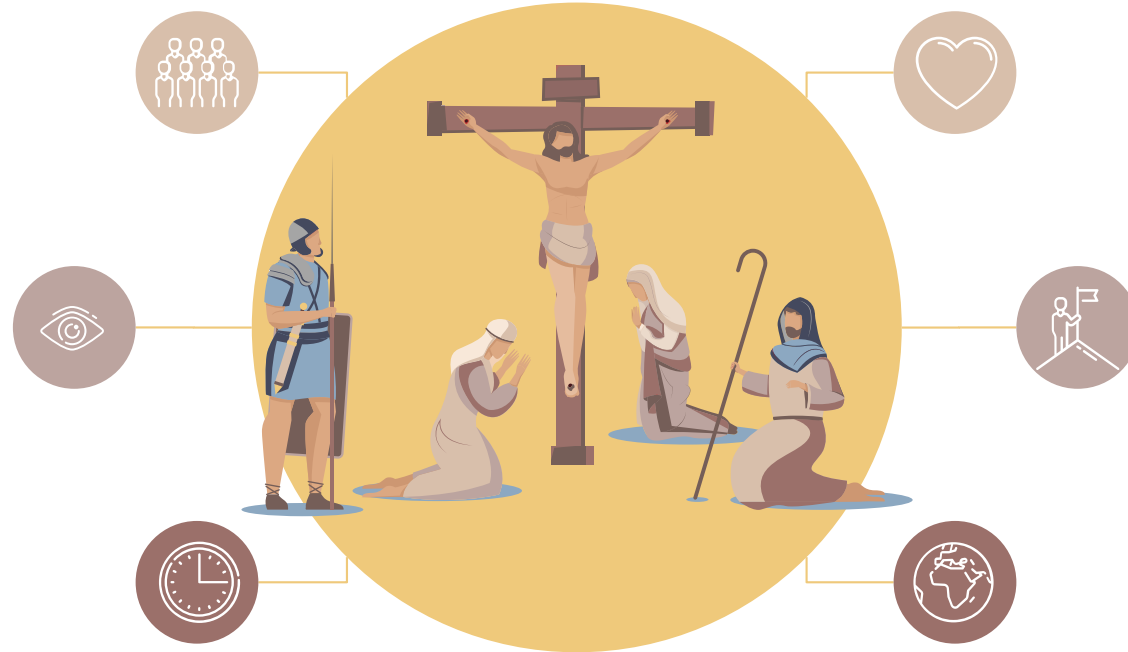
# It wasn't easy to understand the teaching of Jesus

## 12 apostles



# As a follower - it wasn't easy to see Jesus die

## The Crucifixion





# Why is the Lordship of Christ so Difficult?

Why do you call me 'Lord, Lord,' and not do what I tell you? Everyone who comes to me and hears my words and does them, I will show you what he is like: he is like a man building a house, who dug deep and laid the **foundation on the rock**. And when a flood arose, the stream broke against that house and could not shake it, because it had been well built. But the one who hears and does not do them is like a man who built a house on the ground **without a foundation**. When the stream broke against it, immediately it fell, and the ruin of that house was great.

**Luke 6:46-49**

**Good foundations take time and effort**



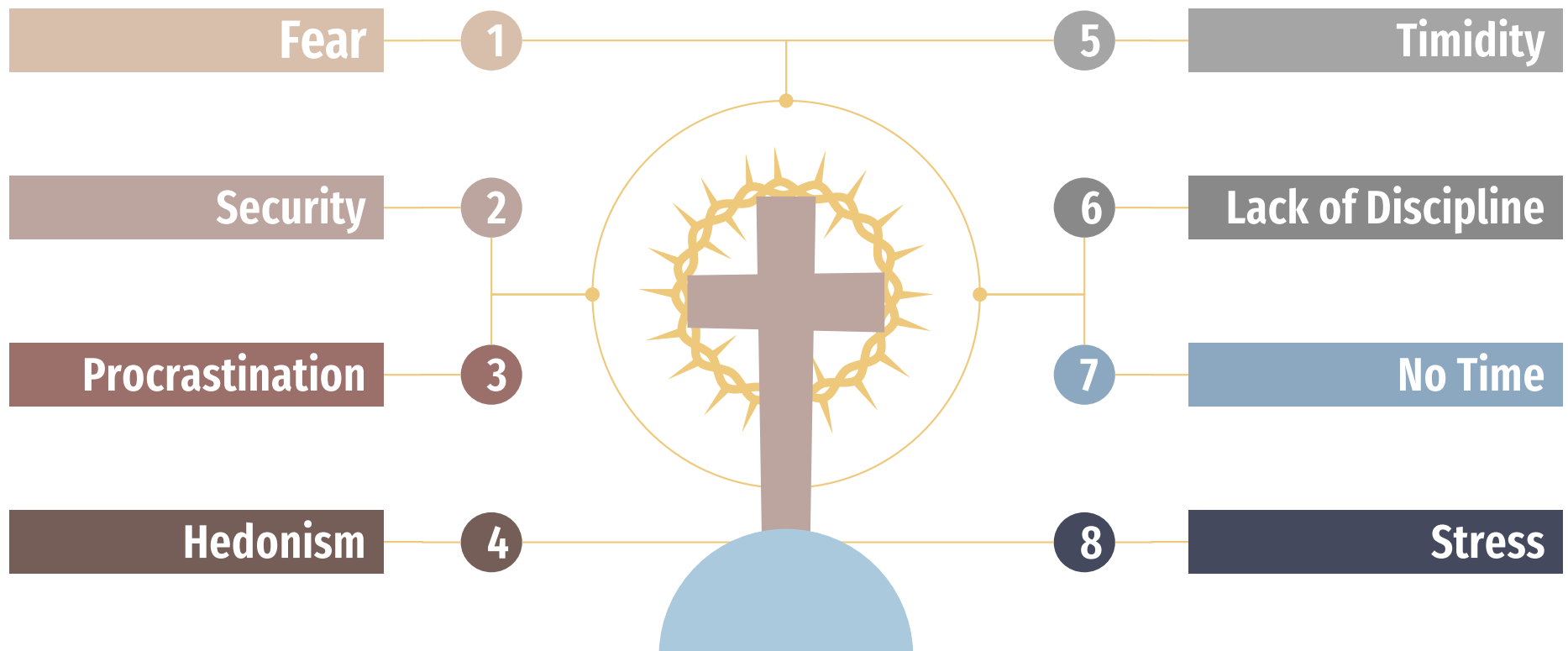
# When there is no foundation - Yellowstone River Floods, 2022





**The house with  
no foundation -  
You say “Lord,  
Lord.”  
You don’t do  
what I tell you.**

# Reasons why we find it difficult to follow Jesus



# It took time for the early Church to realize that the resurrection of Jesus wasn't the end - it was just a beginning

## Gospels

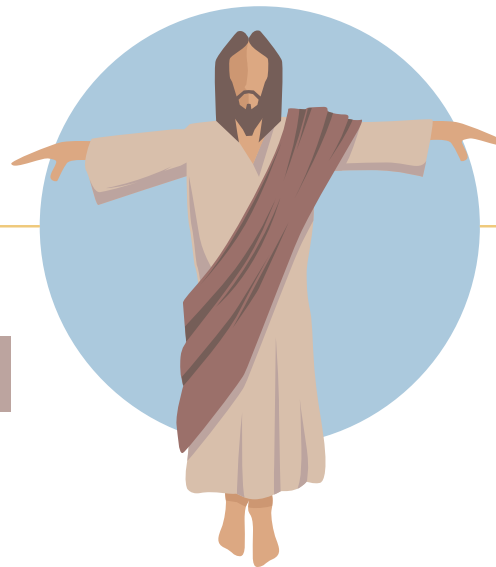
Record the  
Life of Jesus  
60s-90s AD

## Biographies

## Paul's letters

Make sense  
of Jesus's life  
50s-60s AD

## Epistles



## Roman evidence

Testifies to  
his life  
112 AD

## Tacitus

## Josephus

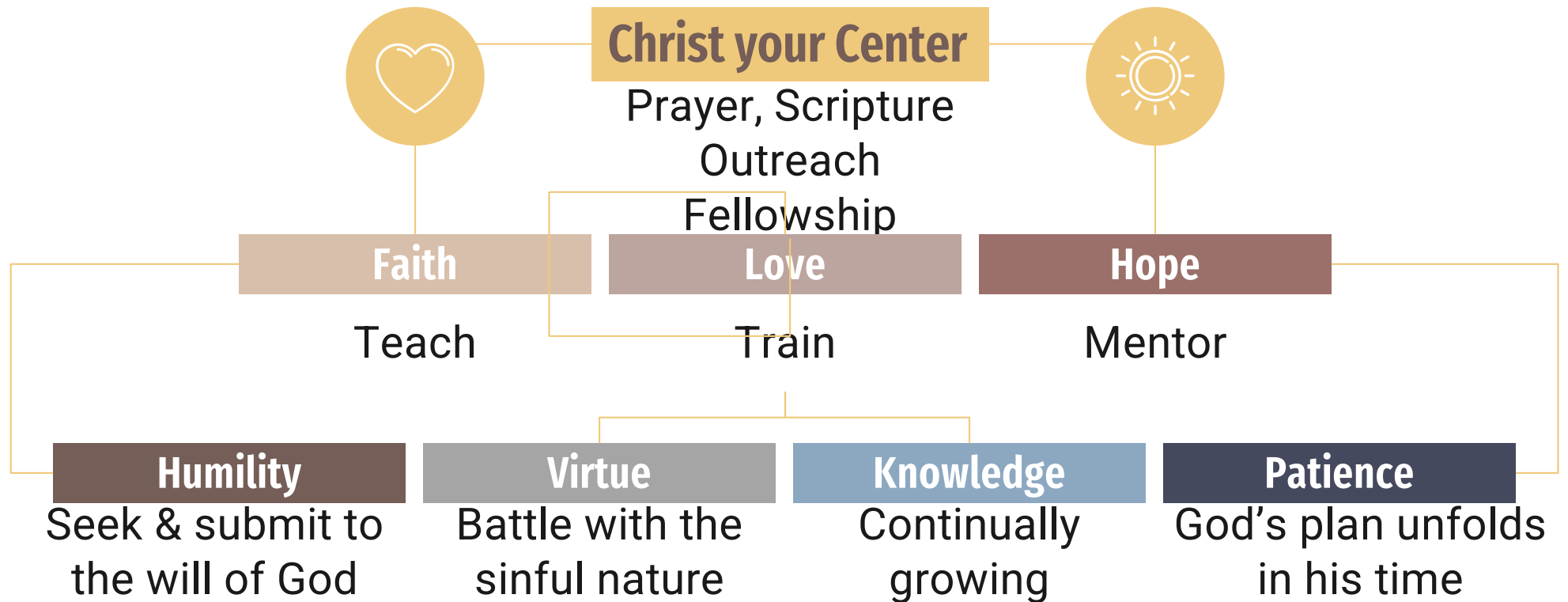
Sets the historical  
context  
90s AD

## History

**Go therefore and make disciples of all nations**

# Living with Obedience to Jesus as your Foundation

## Invest in the Spiritual Being of Others



# Make Obedience to Jesus the Foundation of Your Life



ORCHARD VALLEY CHRISTIAN CHURCH